



COL4A5 Polyclonal Antibody

Catalog No	YP-Ab-16987
Isotype	IgG
Reactivity	Human;Mouse
Applications	IHC;IF;WB;ELISA
Gene Name	COL4A5
Protein Name	Collagen alpha-5(IV) chain
Immunogen	The antiserum was produced against synthesized peptide derived from human Collagen IV alpha5. AA range:21-70
Specificity	COL4A5 Polyclonal Antibody detects endogenous levels of COL4A5 protein.
Formulation	Liquid in PBS containing 50% glycerol, 0.5% BSA and 0.02% sodium azide.
Source	Polyclonal, Rabbit,IgG
Purification	The antibody was affinity-purified from rabbit antiserum by affinity-chromatography using epitope-specific immunogen.
Dilution	WB 1:500-2000 Immunohistochemistry: 1/100 - 1/300. Immunofluorescence: 1/200 - 1/1000. ELISA: 1/10000. Not yet tested in other applications.
Concentration	1 mg/ml
Purity	≥90%
Storage Stability	-20°C/1 year
Synonyms	COL4A5; Collagen alpha-5(IV) chain
Observed Band	160kD
Cell Pathway	Secreted, extracellular space, extracellular matrix, basement membrane.
Tissue Specificity	Isoform 2 is found in kidney.
Function	disease:Defects in COL4A5 are the cause of Alport syndrome X-linked (APSX) [MIM:301050]. APSX is characterized by progressive glomerulonephritis, renal failure, sensorineural deafness, specific eye abnormalities (lenticonous and macular flecks), and glomerular basement membrane defects. The disorder shows considerable heterogeneity in that families differ in the age of end-stage renal disease and the occurrence of deafness.,disease:Deletions covering the N-terminal regions of COL4A5 and COL4A6, which are localized in a head-to-head manner, are the cause of diffuse leiomyomatosis with Alport syndrome (DL-ATS) [MIM:308940]; also known as esophageal and vulval leiomyomatosis with nephropathy or Alport syndrome and diffuse leiomyomatosis (ATS-DL). DL-ATS is the combination of AS and diffuse leiomyomatosis (DL). DL is a tumorous process involving smooth muscle cells, mostly of the esophagus,
Background	This gene encodes one of the six subunits of type IV collagen, the major structural component of basement membranes. Mutations in this gene are



associated with X-linked Alport syndrome, also known as hereditary nephritis. Like the other members of the type IV collagen gene family, this gene is organized in a head-to-head conformation with another type IV collagen gene so that each gene pair shares a common promoter. Alternatively spliced transcript variants have been identified for this gene. [provided by RefSeq, Aug 2010],

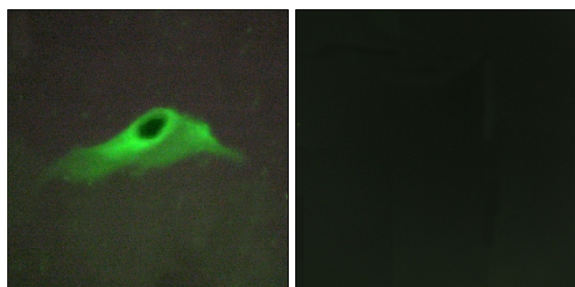
matters needing attention

Avoid repeated freezing and thawing!

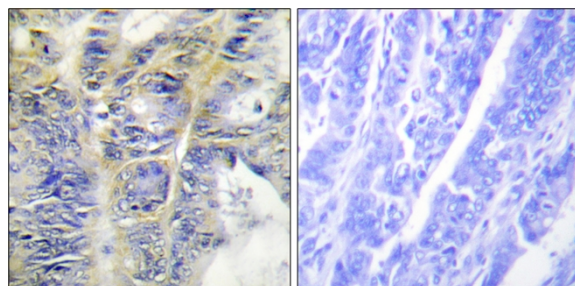
Usage suggestions

This product can be used in immunological reaction related experiments. For more information, please consult technical personnel.

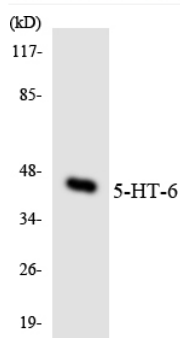
Products Images



Immunofluorescence analysis of HeLa cells, using Collagen IV alpha5 Antibody. The picture on the right is blocked with the synthesized peptide.



Immunohistochemistry analysis of paraffin-embedded human colon carcinoma tissue, using Collagen IV alpha5 Antibody. The picture on the right is blocked with the synthesized peptide.



Western blot analysis of the lysates from COL205 cells using 5-HT-6 antibody.